

- 12.1 Biotechnological Applications in Agriculture
- 12.2 Biotechnological Applications in Medicine
- 12.3 Transgenic Animals
- 12.4 Ethical Issues

Biotechnology, as you would have learnt from the previous chapter, essentially deals with industrial scale production of biopharmaceuticals and biologicals using genetically modified microbes, fungi, plants and animals. The applications of biotechnology include therapeutics, diagnostics, genetically modified crops for agriculture, processed food, bioremediation, waste treatment, and energy production. Three critical research areas of biotechnology are:

Branch of Medicine

Pseudomonas putida.

- (i) Providing the best catalyst in the form of improved organism usually a microbe or pure enzyme.
- (ii) Creating optimal conditions through engineering for a catalyst to act, and
- (iii) Downstream processing technologies to purify the protein/organic compound.

Let us now learn how human beings have used biotechnology to improve the quality of human life, especially in the field of food production and health.

12.1 BIOTECHNOLOGICAL APPLICATIONS IN AGRICULTURE

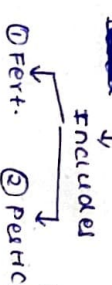
Let us take a look at the three options that can be thought for increasing food production

- (i) agro-chemical based agriculture;

→ very costly

very slow

Agrochemicals



we use G.M.C. so that cost of fertilizers can be avoided and

pollution can also be controlled

due to vit-A, wheat is nutrient of night blindness.

These rice and enriched nutritional value of food, e.g. golden rice, i.e. Vitamin A

gene extracted from Datura.

major made plants re- for a high yield and disease resistance etc.

For INSECT resistance 208 (NEET 2020) from arthropods resistance.

Organic agriculture: and genetically engineered crop-based agriculture.

The Green Revolution succeeded in increasing the food supply but yet it was not enough to feed the growing human population. Increased yields have partly been due to the use of improved crop varieties, but mainly due to the use of better management practices and use of agrochemicals (fertilisers and pesticides). However, for farmers in the developing world, agrochemicals are often too expensive, and further increases in yield with existing varieties are not possible using conventional breeding. Is there any alternate path that our understanding of genetics can show so that farmers may obtain maximum yield from their fields? Is there a way to minimise the use of fertilisers and chemicals so that their harmful effects on the environment are reduced? Use of genetically modified crops is a possible solution.

Plants, bacteria, fungi and animals whose genes have been altered by manipulation are called Genetically Modified Organisms (GMO). GM plants have been useful in many ways. Genetic modification has:

- made crops more tolerant to abiotic stresses (cold, drought, salt, heat).
- reduced reliance on chemical pesticides (pest-resistant crops).
- helped to reduce post harvest losses.
- increased efficiency of mineral usage by plants (this prevents early exhaustion of fertility of soil).
- enhanced nutritional value of food, e.g. golden rice, i.e. Vitamin A

in addition to these uses, GM has been used to create tailor-made plants (supply alternative resources to industries, in the form of starches, fuels and pharmaceuticals)

Some of the applications of biotechnology in agriculture that you will study in detail are the production of pest resistant plants, which could decrease the amount of pesticide used (Bt toxin is produced by a bacterium called *Bacillus thuringiensis* [Bt for short]). Bt toxin gene has been cloned from the bacteria and been expressed in plants to provide resistance to insects without the need for insecticides; in effect created a bio-pesticide. Examples are Bt cotton, Bt corn, rice, tomato, potato and soyabean etc.
 Bt toxin is produced by a bacterium called *Bacillus thuringiensis* (Bt for short). Bt toxin gene has been cloned from the bacteria and been expressed in plants to provide resistance to insects without the need for insecticides; in effect created a bio-pesticide. Examples are Bt cotton, Bt corn, rice, tomato, potato and soyabean etc.
 Some strains of *Bacillus thuringiensis* produce proteins that kill certain insects such as lepidopterans (tobacco budworm, armyworm), coleopterans (beetles) and dipterans (flies, mosquitoes). *B. thuringiensis* forms protein crystals during a particular phase of their growth. These crystals contain a toxic insecticidal protein. Why does this toxin not kill the *Bacillus*? Actually, the Bt toxin protein exists as inactive protoxins but once an insect ingests the inactive toxin, it is converted into an active form of toxin due to the alkaline pH of the gut which solubilise the crystals. The activated toxin binds to the surface of midgut epithelial cells and

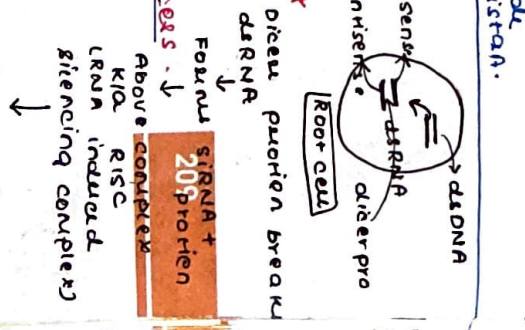
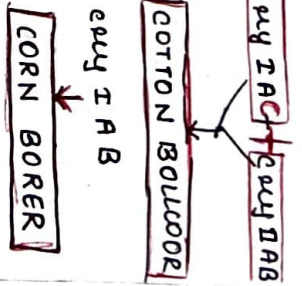
that cause cell swelling and lysis and eventually cause death

specific Bt toxin genes were isolated from *Bacillus thuringiensis* and incorporated into the several crop plants such as cotton (Figure 12.1). The choice of genes depends upon the crop and the targeted pest. As an example, Bt toxins are insect-group specific. The toxin is coded by a gene named *cry*. There are a number of them, for example, the proteins coded by the gene *cryIIAb* and *cryIIAb* control the cotton bollworms, and *cryIAb* controls corn borer.



Figure 12.1 Cotton boll: (a) destroyed by bollworms; (b) a fully mature cotton boll

For RNA interference - For nematode or arcel. resistance. Several nematodes parasitise a wide variety of plants and animals including human beings. A nematode *Meloidogyne incognita* infects the roots of tobacco plants and causes a great reduction in yield. A novel strategy was adopted to prevent this infestation which is based on the process of RNA interference (RNAi). RNAi takes place in all eukaryotic organisms as a method of cellular defense. This method involves silencing of a specific mRNA due to a complementary dsRNA molecule that binds to and prevents translation of the mRNA (silencing). The source of this complementary RNA could be from an infection by viruses having RNA genomes or mobile genetic elements (transposons) that replicate via an RNA intermediate. Post-transcriptional processes. Using *Agrobacterium* vectors, nematode-specific genes were introduced into the host plant (Figure 12.2). The introduction of DNA was such that it produced both sense and anti-sense RNA in the host cells. These two RNA's being complementary to each other formed a double stranded dsRNA that initiated RNAi and thus, silenced the specific mRNA.



GOVT 2023

Flavour not ripening
Improved flavour
ripening acquired
removed to prevent ripening.

* Grey Phop have
a herbicide
prevent ripening
of aromatic
A. B. (amino
acids)

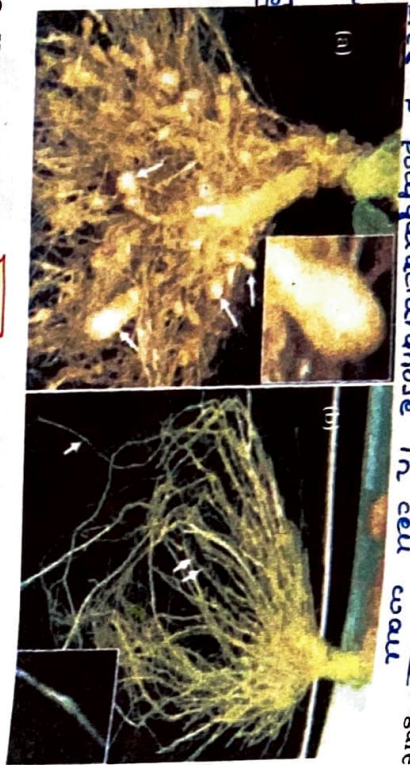


Figure 12.2 Host plant-generated dsRNA triggers protection against nematode infestation: (a) Roots of a typical control plant; (b) transgenic plant roots 5 days after deliberate infection of nematode but protected through novel mechanism.

of the nematode. The consequence was that the parasite could not survive in a transgenic host expressing specific interfering RNA. The transgenic plant therefore got itself protected from the parasite (Figure 12.2).

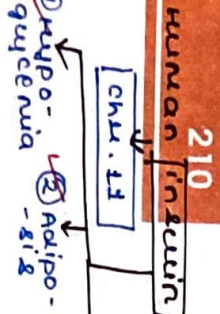
12.2 BIOTECHNOLOGICAL APPLICATIONS IN MEDICINE

The recombinant DNA technological processes have made immense impact in the area of healthcare by enabling mass production of safe and more effective therapeutic drugs. Further, the recombinant therapeutics do not induce unwanted immunological responses as is common in case of similar products isolated from non-human sources. At present, about 30 recombinant therapeutics have been approved for human use the world over. In India, 12 of these are presently being marketed.

12.2.1 Genetically Engineered Insulin

Management of adult-onset diabetes is possible by taking insulin at regular time intervals. What would a diabetic patient do if enough human-insulin was not available? If you discuss this, you would soon realise that one would have to isolate and use insulin from other animals. Would the insulin isolated from other animals be just as effective as that secreted by the human body itself and would it not elicit an immune response in the human body? Now, imagine if bacterium were available that could make human insulin. Suddenly the whole process becomes so simple. You can easily grow a large quantity of the bacteria and make as much insulin as you need.

Protein engineering about whether insulin can be orally administered to diabetic people or not. Why?
As insulin → protein → digestion in stomach.



BIOTECHNOLOGY AND ITS APPLICATIONS

Insulin used for diabetes was earlier extracted from pancreas of slaughtered cattle and pigs. Insulin from an animal source, though caused some patients to develop allergy or other types of reactions to the foreign protein. Insulin consists of two short polypeptide chains: Chain A and chain B, that are linked together by disulphide bridges (Figure 12.3). In mammals including humans, insulin is synthesised as a pro-hormone (like a pro-enzyme), the pro-hormone also needs to be processed before it becomes a fully mature and functional hormone which contains an extra stretch called the C-peptide. The C-peptide is not present in the mature insulin and is removed during maturation into insulin. The main challenge for production of insulin using rDNA techniques is getting insulin assembled into a mature form. In 1983, Eli Lilly an American company prepared two DNA sequences corresponding to A and B chains of human insulin and introduced them into plasmids of E. coli to produce insulin chains. Chains A and B were produced separately, extracted and combined by creating disulphide bonds from human insulin.

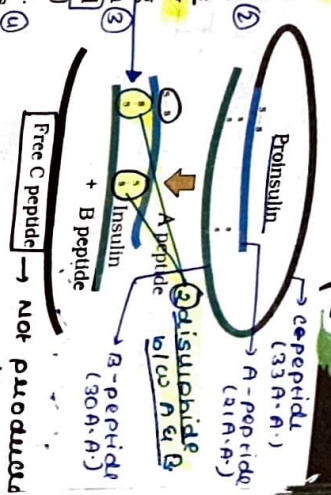


Figure 12.3 Maturation of pro-insulin into insulin (simplified)

12.2.2 Gene Therapy

A person is born with a hereditary disease, can a corrective therapy be taken for such a disease? Gene therapy is an attempt to do this. Gene therapy is a collection of methods that allows correction of a gene defect that has been diagnosed in a child/embryo. Here genes are inserted into a person's cells and tissues to treat a disease. Correction of a genetic defect involves delivery of a normal gene into individual or embryo to take over the function of a normal gene into the non-functional gene. The first clinical gene therapy was given in 1990 to a 4-year old girl with adenosine deaminase (ADA) deficiency. This enzyme is crucial for the immune system to function. The disorder is caused due to the deletion of the gene for adenosine deaminase. In some children ADA deficiency can be cured by bone marrow transplantation. In others it can be treated by enzyme replacement therapy. In which functional ADA is given to the patient by injection. But the problem with both of these approaches that they are not completely curative. As a first step towards gene therapy, lymphocytes from the blood of the patient are grown in a culture outside the body. A functional ADA cDNA (using a retroviral vector) is then introduced into these lymphocytes, which are subsequently returned to the patient. However, as these cells are not immortal, the patient requires periodic infusion of such genetically engineered lymphocytes. However, if the gene isolate from marrow cells producing ADA is introduced into cells in early embryonic stages, it could be a permanent cure.

Only a limited number of transduced cells is that there are not phagocytosed or degraded by only enzyme, not mutation.

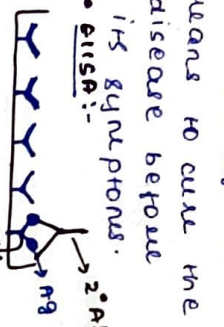
IN ALL MAMMALS IT IS SYN. OF PROINSULIN NOT ONLY HUMANS.
IN MATURE INSULIN 21 + 30 = 51 (A-B)
IN MATURE INSULIN
A-peptide (33 A.A.)
B-peptide (30 A.A.)
C-peptide (21 A.A.)
Disulphide bonds A & B
Free C-peptide → NOT PRODUCED
A peptide
B peptide
Insulin
Proinsulin

• IN MATURE INSULIN
21 + 30 = 51 (A-B)
IN MATURE INSULIN
A-peptide (33 A.A.)
B-peptide (30 A.A.)
C-peptide (21 A.A.)
Disulphide bonds A & B
Free C-peptide → NOT PRODUCED
A peptide
B peptide
Insulin
Proinsulin

• Some marrow trans- lymphocyte grown outside.
① • enzyme RE-T
By injection
Gene therapy trans- taken from blood grown in cult. OUTSIDE body. cDNA given using retroviral vector. require period infusion.

Diagnosis: \rightarrow Exact illness and cause
 • Effective treatment \rightarrow Early diagnosis

12.2.3 Molecular Diagnosis

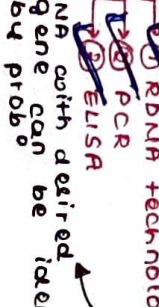


Ag -nt = NO change in colour.
 Ag +nt = colour change

USES OF PCR:-

- Detect HIV
- Detect mutation
- Detect genetic disorders

Early diagnosis



Animals that have foreign gene intentionally inserted to wild genome.

gene ke daine se body ke physiology pe kya effect aaya.

170
175
185
195
6/15

You know that for effective treatment of a disease, early diagnosis and understanding its pathophysiology is very important. Using conventional methods of diagnosis (serum and urine analysis, etc.) early detection is not possible. Recombinant DNA technology, Polymerase Chain Reaction (PCR) and Enzyme Linked-Immuno-sorbent Assay (ELISA) are some of the techniques that serve the purpose of early diagnosis.

Presence of pathogen (bacteria, viruses, etc.) is normally suspected only when the pathogen has produced a disease symptom. By this time the concentration of pathogen is already very high in the body. However, very low concentration of a bacteria or virus (at a time when the symptoms of the disease are not yet visible) can be detected by amplification of their nucleic acid by PCR. Can you explain how PCR can detect very low amounts of DNA? PCR is now routinely used to detect HIV in suspected AIDS patients. It is being used to detect mutations in genes in suspected cancer patients too. It is a powerful technique to identify many other genetic disorders.

ELISA is based on the principle of antigen-antibody interaction. Infection by pathogen can be detected by the presence of antigens (proteins, glycoproteins, etc.) or by detecting the antibodies synthesised against the pathogen. About ELISA

12.3 TRANSGENIC ANIMALS

Animals that have had their DNA manipulated to possess and express an extra (foreign) gene are known as transgenic animals. Transgenic rats, rabbits, pigs, sheep, cows and fish have been produced, although over 95% per cent of all existing transgenic animals are mice. Why are these animals being produced? How can man benefit from such modifications? Let us try and explore some of the common reasons:

Normal physiology and development: Transgenic animals can be specifically designed to allow the study of how genes are regulated, and how they affect the normal functions of the body and its development. e.g., study of complex factors involved in growth such as insulin-like growth factor. By introducing genes from other species that alter the formation of this factor and studying the biological effects that result, information is obtained about the biological role of the factor in the body.

Study of disease: Many transgenic animals are designed to increase our understanding of how genes contribute to the development of

BIOTECHNOLOGY AND ITS APPLICATIONS

disease. These are specially made to serve as models for human diseases so that investigation of new treatments for diseases is made possible. Today transgenic models exist for many human diseases such as cancer, cystic fibrosis, rheumatoid arthritis and Alzheimer's.

Biological products: Medicines required to treat certain human diseases can contain biological products, but such products are often expensive to make. Transgenic animals that produce useful biological products can be created by the introduction of the portion of DNA (or genes) which codes for a particular product such as human albumin (or α -antitrypsin) used to treat emphysema. Similar attempts are being made for treatment of phenylketonuria (PKU) and cystic fibrosis. In 1997, the first transgenic cow, Rosie, produced human protein-enriched milk (2.4 grams per litre). The milk contained the human α -lactalbumin and was nutritionally a more balanced product for human babies than natural cow-milk.

Vaccine safety: Transgenic mice are being developed for use in testing the safety of vaccines before they are used on humans. Transgenic mice are being used to test the safety of the polio vaccine. If successful and found to be reliable, they could replace the use of monkeys to test the safety of batches of the vaccine.

Chemical safety testing: This is known as toxicity/safety testing. The procedure is the same as that used for testing toxicity of drugs. Transgenic animals are made that carry genes which make them more sensitive to toxic substances than non-transgenic animals. They are then exposed to the toxic substances and the effects studied. Toxicity testing in such animals will allow us to obtain results in less time.

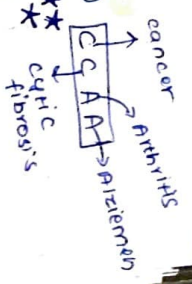
12.4 ETHICAL ISSUES

The manipulation of living organisms by the human race cannot go on any further, without regulation. Some ethical standards are required to evaluate the morality of all human activities that might help or harm living organisms.

Going beyond the morality of such issues, the biological significance of such things is also important. Genetic modification of organisms can have unpredictable results when such organisms are introduced into the ecosystem.

Therefore, the Indian Government has set up organisations such as **GEAC** (Genetic Engineering Approval Committee), which will make decisions regarding the validity of GM research and the safety of introducing GM-organisms for public services.

The modification/usage of living organisms for public services (as food and medicine sources, for example) has also created problems with patents granted for the same.



Common milk has more protein and less fat.
 Cows has more fat and less protein.

Gut Rosie cow has more protein also (α -lactalbumin).
 Andi, Rosie and Tracy are transgenic animal.
 Gut Rosie cow cloned animal.

* bioaugmentation: genetic materials, plants and other biological resources that have long been identified, developed and used by farmers and indigenous people of a specific region/country.

to total

There is growing public anger that certain companies are being granted patents for products and technologies that make use of the genetic materials, plants and other biological resources that have long been identified, developed and used by farmers and indigenous people of a specific region/country. Rice is an important food grain, the presence of which goes back 200,000 years in Asia's agricultural history. There are an estimated 27 documented varieties of Basmati rice which is one of the richest in the world. Basmati rice is distinct for its unique aroma and flavour and documented varieties of Basmati are grown in India. There is reference to Basmati in ancient texts, folklore and poetry, as it has been grown for centuries. In 1997, an American company got patent rights on Basmati rice through the US Patent and Trademark Office. This allowed the company to sell a 'new' variety of Basmati, in the US and abroad. This 'new' variety of Basmati had actually been derived from Indian farmer's varieties. Indian Basmati was crossed with semi-dwarf varieties and claimed as an invention or a novelty. The patent extends to functional equivalents, implying that other people setting Basmati rice could be restricted by the patent. Several attempts have also been made to patent uses, products and processes based on Indian traditional herbal medicines e.g., turmeric, neem. If we are not vigilant and we do not immediately counter these patent applications, other countries/individuals may encash on our rich legacy and we may not be able to do anything about it.

Biopiracy is the term used to refer to the use of bio-resources by multinational companies and other organisations without proper authorisation from the countries and people concerned without compensatory payment.

Most of the industrialised nations are rich financially but poor in biodiversity and traditional knowledge. In contrast the developing and the underdeveloped world is rich in biodiversity and traditional knowledge related to bio-resources. Traditional knowledge related to bio-resources can be exploited to develop modern applications and can also be used to save time, effort and expenditure during their commercialisation.

There has been growing realisation of the injustice, inadequate compensation and benefit sharing between developed and developing countries. Therefore, some nations are developing laws to prevent such unauthorised exploitation of their bio-resources and traditional knowledge. The Indian Parliament has recently cleared the second amendment of the Indian Patents Bill, that takes such issues into consideration, including patent terms, emergency provisions and research and development initiative.

SUMMARY

Biotechnology has given to humans several useful products by using microbes, plant, animals and their metabolic machinery. Recombinant DNA technology has made it possible to engineer microbes, plants and animals such that they have novel capabilities. Genetically modified organisms have been created by using methods other than natural methods to transfer one or more genes from one organism to another, generally using techniques such as recombinant DNA technology.

GM plants have been useful in increasing crop yields, reduce post-harvest losses and make crops more tolerant of stresses. There are several GM crop plants with improved nutritional value of foods and reduced the reliance on chemical pesticides (pest-resistant crops).

Recombinant DNA technological processes have made immense impact in the area of healthcare by enabling mass production of safe and more effective therapeutics. Since the recombinant therapeutics are identical to human proteins, they do not induce unwanted immunological responses and are free from risk of infection as was observed in case of similar products isolated from non-human sources. Human insulin is made in bacteria yet its structure is absolutely identical to that of the natural molecule.

Transgenic animals are also used to understand how genes contribute to the development of a disease by serving as models for human diseases, such as cancer, cystic fibrosis, rheumatoid arthritis and Alzheimer's.

Gene therapy is the insertion of genes into an individual's cells and tissues to treat diseases especially hereditary diseases. It does so by replacing a defective mutant allele with a functional one or gene targeting which involves gene amplification. Viruses that attack their hosts and introduce their genetic material into the host cell as part of their replication cycle are used as vectors to transfer healthy genes or more recently portions of genes.

The current interest in the manipulation of microbes, plants, and animals has raised serious ethical questions.

EXERCISES

Crystals of Bt toxin produced by some bacteria do not kill the bacteria themselves because -

- (a) bacteria are resistant to the toxin
 - (b) toxin is immature;
 - (c) toxin is inactive;
 - (d) bacteria encloses toxin in a special sac.
- What are transgenic bacteria? Illustrate using any one example.
- Compare and contrast the advantages and disadvantages of production of genetically modified crops.